



# About us



**Thai Toda Corporation Ltd.** is a subsidiary of Toda Corporation whose is headquarters in Japan with over 130s years of experience. We at THAI TODA focus on developing new know-how, innovations, and technologies to support world's construction growth and expansion. Bangkok office is our base, we also have an office in Lamphun.

## Under its corporate credo of "Realizing high-quality construction, safely and on time"

THAI TODA CORPORATION's numerous achievements since its establishment in 1988 include condominiums and hospitals. At present, its operations are focused primarily on the construction of production facilities, warehouse and other facilities.

We at THAI TODA are confident that our knowledge and experience gained over 30 years of history can make a worthwhile contribution to the development and investment of our customers.

The excellent teamwork involving our Thai staff members, who have shown steady improvement in their skill levels, and Japanese staff members are the culmination of their positive relationship.

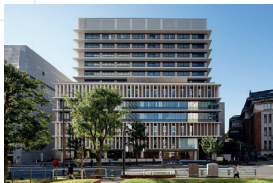
Please feel free to contact us at any time. We are eager to work with you.



Aoyama Gakuin University (AGU),  
Sagamihara, Kanagawa, Japan



Mitsubishi Estate Co., Ltd.,  
Tokyo, Japan



Kudanzaka Hospital,  
Chiyoda, Tokyo



Yukijirushi Ami Nyūseihin Tōgō Factory,  
Ibaraki, Japan

## TODA Group Global Vision

**A corporate group that makes your success possible**

**For the satisfaction of our customers**

We will build strong, reliable partnerships with our customers by delivering our precise technical expertise and comprehensive human resources.

**For work we can be proud of**

All of us at TODA work together to create a successful environment that allows us to bring passion and a strong sense of responsibility to each project we undertake.

**For future generations and our planet**

We will create an environment-friendly society that is both safe and secure by aggressively tackling challenges posed by changing times and social circumstances.



# TODA Group

## World network

Global sites deliver quality and confidence



# Reference Project.



Amata City Industrial Estate  
Chonburi



Siam NGK Spark Plug Co., Ltd.

Rayong



Kure Grinding Wheel (Thailand) Co., Ltd.

WHA Chonburi Industrial Estate,  
Chonburi



Nikkei MC Aluminum (Thailand) Co., Ltd.

Pinthong Land,  
Chonburi



Senko Logistics Distribution (Thailand) Co., Ltd.

Rojana Industrial Park,  
Ayutthaya



Keihin Auto Parts (Thailand) Co., Ltd.

304 Industrial Park,  
Prachinburi



Thai Yanagawa Co., Ltd.

Rojana Industrial Park,  
Prachinburi



AZL (Thailand) Co., Ltd.

Eastern Seaboard Industrial Estate,  
Rayong



Nissei Plastic Machinery (Thailand) Co., Ltd.

Bangna-Trad Road km. 27,  
Samutprakarn



Yusen Logistics (Thailand) Co., Ltd.

Highrise Building, Central Bangkok



Mandarin Condominium & Serviced Apartment  
(Sukhumvit Soi 16)



Krisada Plaza  
(Ratchadapisek)



Kasemraj Hospital  
(Prachachuen)





## Lamphun Project



Murata Electronics (Thailand) Ltd.



Standard Units Supply (Thailand) Co., Ltd.



AGC Micro Glass (Thailand) Co., Ltd.



Murata Electronics (Thailand) Ltd.



Murata Electronics (Thailand) Ltd.



Murata Electronics (Thailand) Ltd.



Tanaka Precision (Thailand) Co., Ltd.



Hana Microelectronics Public Co., Ltd.



Keihin (Thailand) Co., Ltd.

# Service and Scope

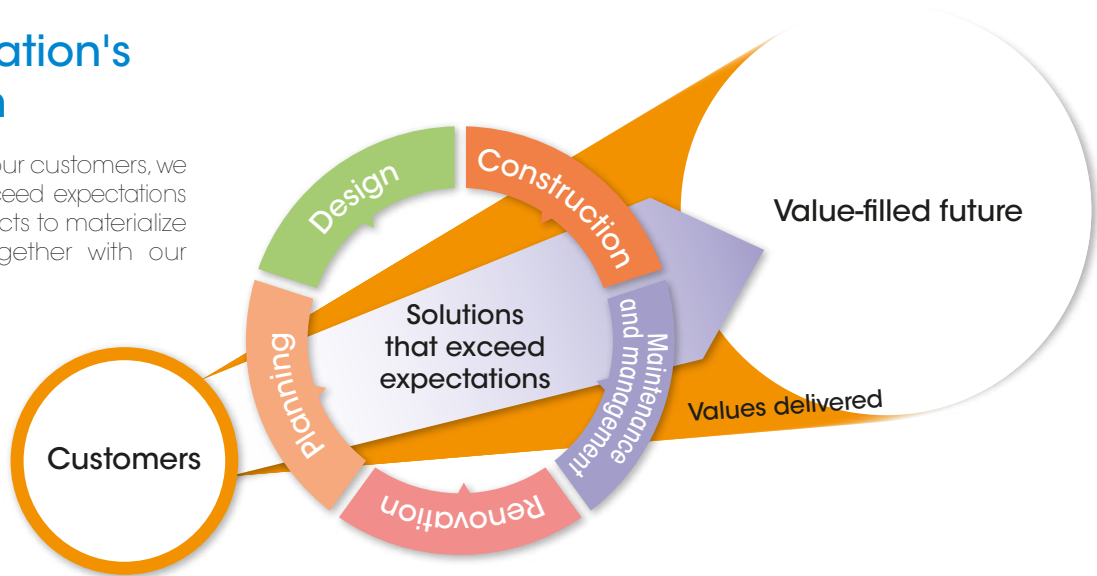


THAI TODA's head office is located in Bangkok and also has a base in Lamphun, enabling it to support our customers.

THAI TODA is a turnkey contractor, provides comprehensive construction services of design and construction in various forms to meet the needs of customer efficiently, worth the budget of investment and most useful.

## Toda Corporation's Total Solution

As a reliable partner of our customers, we provide solutions that exceed expectations in all stages of our projects to materialize a value-filled future together with our customers.



### Planning

With full understanding our customer's business concept, we work to resolve any challenges that may arise in the process.

### Design

Working closely with our customers, we envision a future and build new values together.

### Construction

By dedicating on safety and quality, we help shaping our customer's passion into reality.

### Maintenance and management

Our entire lifecycle policy devotes to protect our customer's precious property and maintain quality and value of their assets.

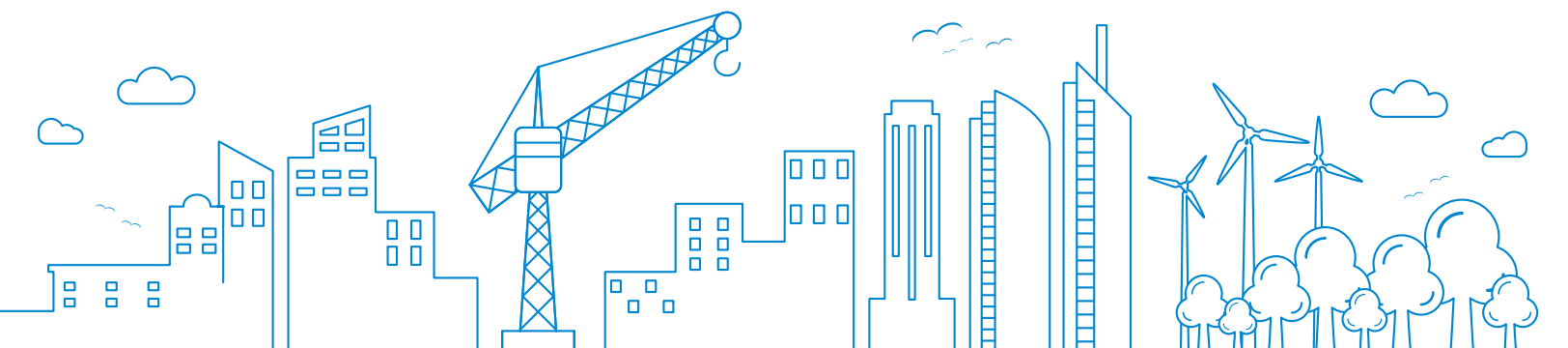
### Renovation

Our great variety of technologies and expertise help breathe new life into customer's property.

### Liaison

By providing our customers with consultations to find land for construction and assistance in applying for construction permits.

THAI TODA's strength is the support from Toda Corporation head office in Japan. Therefore, every step of the whole construction process is maintained strongly the policy in complying with the quality and safety standards of its parent company in Japan ensuring that it can best meet the needs of its customers. With deliberate after-sales services, all projects supervised by Thai Toda Corporation Ltd. are within the specified budget together with high quality, safety, durability, and environmental friendliness.



# "Value-Filled Future" for People and Society

Our credo of a "value-filled future" demonstrates our mission of ensuring that customers feel a sense of satisfaction beyond what they had envisioned.

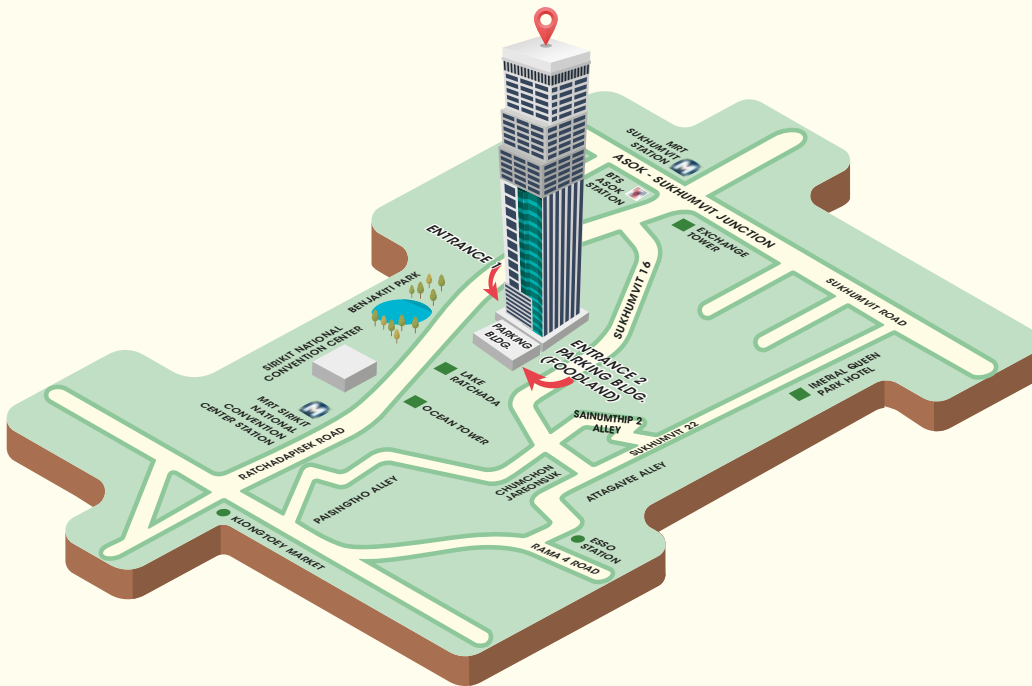
To put this into reality, we at Thai Toda Corporation Ltd. believe in the need to create and offer our customers the level of comfort and convenience beyond expectations.

What would be the shape of the future people experience when they actually use the space and functions we have produced?

That theme has powered the total solutions we deliver with a focus on "monozukuri" or "goods manufacturing."

We will continue to provide people and society with a "value-filled future" through the art of goods manufacturing that defies all expectations based on our treasured communication with our customers.

## COLUMN TOWER



## THAI TODA CORPORATION LTD.

### Bangkok Office :

199 Column Tower 20<sup>th</sup> Floor, Ratchadapisek Rd.,  
Klongtoey, Bangkok 10110

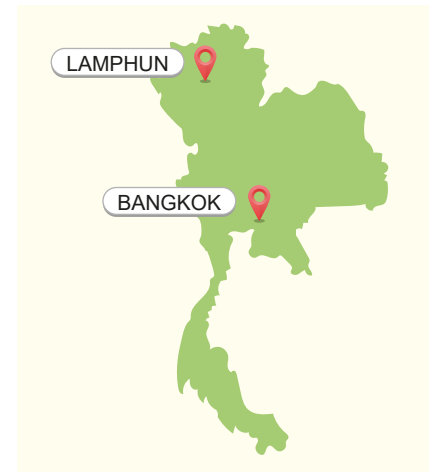
Tel: (+66) 02 261-6544 Fax: (+66) 02 261-6545

### Lamphun Office :

Northern Region Industrial Estate, 60/16-17 Moo. 4,  
T. Bahnklang A. Mueang, Lamphun 51000

Tel: (+66) 053-581-292-3 Fax: (+66) 053-581-294

[www.thaitoda.co.th](http://www.thaitoda.co.th)



# Company Profile

---

<b>Company Name</b>	Thai Toda Corporation Ltd.
<b>Managing Director</b>	Mr. Kenji Kurahashi
<b>Location</b>	
<b>Head Office</b>	199 Column Tower 20 <sup>th</sup> Floor, Ratchadapisek Road, Klongtoey, Bangkok 10100 Thailand
<b>Lamphun office</b>	Northern Region Industrial Estate, 60/60-17 Moo.4, T.Bahnklang A.Mueng, Lamphun 51000 Thailand
<b>Established</b>	October 1988
<b>Registered Capital</b>	20,000,000 THB
<b>Main Business</b>	Building construction, surveying concern with civil engineering and etc., planning, design, supervision, construction comprehensive engineering and consulting services
<b>No. of employees</b>	148 Persons (as of December 2021)
<b>Board of Directors</b>	Chairman Kazuyoshi Nitahara (Branch Manager, Head of Overseas Div., Toda Corporation) Director Mr. Yuji Kikutani (Representative Director, Toda Corporation) Mr. Kenji Kurahashi (Managing Director of Thai Toda) Mr. Wanchai Asawanaruedol (Deputy MD of Thai Toda)

---

## Construction Completed

No.	Project Name / Location	Building Detail	Con. Period	Client Name
1	Regional Agricultural Cooperatives Training Center, Nakhon Rachasima	2 storey building Area : 4,425 m2	May 1985 ~ Feb 1986	Ministry of Agriculture and Cooperatives
2	Murata Electronics Factory Phase 1, Northern Region I.E., Lamphun	1 storey factory Area : 4,462 m2	Dec 1988 ~ Jun 1989	Murata Electronics (Thailand) Ltd.
3	Murata Electronics Factory Phase 2, Northern Region I.E., Lamphun	1 storey factory Area : 5,940 m2	Sep 1989 ~ Apr 1991	Murata Electronics (Thailand) Ltd.
4	Murata Electronics Factory Phase 3, Northern Region I.E., Lamphun	1 storey factory Area : 3,600 m2	Jun 1990 ~ Apr 1991	Murata Electronics (Thailand) Ltd.
5	Murata Electronics Factory Phase 4, Northern Region I.E., Lamphun	1 storey factory Area : 3,600 m2	Jul 1991 ~ Mar 1992	Murata Electronics (Thailand) Ltd.
6	Murata Electronics Factory Phase 5, Northern Region I.E., Lamphun	1 storey factory Area : 3,600 m2	Mar 1992 ~ Nov 1992	Murata Electronics (Thailand) Ltd.
7	Murata Electronics Factory Phase 6, Northern Region I.E., Lamphun	1 storey factory Area : 3,600 m2	Nov 1992 ~ Jul 1993	Murata Electronics (Thailand) Ltd.
8	Nozaki Apparel Factory, Northern Region I.E., Lamphun	1 storey factory Area : 1,308 m2	May 1993 ~ Oct 1993	Nozaki App (Thailand) Co., Ltd.
9	Thai Hirota Factory, Northern Region I.E., Lamphun	1 storey factory Area : 1,125 m2	Sep 1993 ~ Jan 1994	Thai Hirota Co., Ltd.
10	Thai N.J.R.Factory, Northern Region I.E., Lamphun	1 storey factory Area : 648 m2	Apr 1994 ~ Aug 1994	Thai N.J.R. Co., Ltd.
11	Murata Electronics Factory Phase 7, Northern Region I.E., Lamphun	1 storey factory Area : 6,723 m2	Jan 1994 ~ Oct 1994	Murata Electronics (Thailand) Ltd.
12	Keihin Factory Phase 2, Northern Region I.E., Lamphun	1 storey factory Area : 3,206 m2	Jul 1994 ~ Mar 1995	Keihin (Thailand) Co., Ltd.
13	Siam Nippon Steel Pipe Factory, Siam Eastern I.E., Rayong	1 storey factory Area : 9,472 m2	Mar 1995 ~ Mar 1996	Siam Nippon Steel Pipe Co., Ltd.
14	Electro - Ceramics Thai Factory, Northern Region I.E., Lamphun	1 storey factory Area : 3,500 m2	Oct 1995 ~ May 1996	Electro Ceramics (Thailand) Co., Ltd.
15	Krisda Plaza - Stage 1, Ratchadapisek Road, Bangkok	18 storey building Area : 9,757 m2	Feb 1995 ~ Aug 1996	KMC-Hiphing Construction Co., Ltd.
16	Keihin Seiki Maintenance Factory, Northern Region I.E., Lamphun	1 storey factory Area : 2,085 m2	Jan 1996 ~ May 1996	Keihin (Thailand) Co., Ltd.



<b>No.</b>	<b>Project Name / Location</b>	<b>Building Detail</b>	<b>Con. Period</b>	<b>Client Name</b>
17	Kasemraj Prachachuen Hospital, Prachachuen Road, Bangkok	12/2 storey hospital Area : 56,020 m2	Mar 1996 ~ Jun 1997	Bangkok Chain Hospital Co., Ltd.
18	MMC Truck Service, Pathumthani	1 storey building Area : 4,404 m2	Jan 1997 ~ Sep 1997	MMC Sitthipol Co., Ltd.
19	Daiwa Seiko Factory, Ladkrabang I.E., Bangkok	2 factory & canteen Area : 8,259 m2	Sep 1997 ~ Aug 1998	Daiwa Seiko (Thailand) Co., Ltd.
20	Sunarrow Citi Extension Factory, Saraburi	2 storey factory Area : 4,216 m2	Jan 1998 ~ Oct 1998	Sunarrow Citi Co., Ltd.
21	Mandarin Serviced Apartment, Sukhumvit Soi 16, Bangkok	26 storey apartment Area : 21,274 m2	Jul 1996 ~ May 1999	Mandarin Hotel Public Co., Ltd.
22	Mandarin Condominium, Sukhumvit Soi 16, Bangkok	31 storey condo. Area : 31,822m2	Jul 1996 ~ Jul 1999	Mandarin Hotel Public Co., Ltd.
23	Keihin TL Factory Expansion, Northern Region I.E. Lamphun	1 storey factory 3 b. Area : 4,241 m2	Aug 2000 ~ Feb 2001	Keihin (Thailand) Co., Ltd.
24	Murata Warehouse Extension Bld., Northern Region I.E. Lamphun	2 storey warehouse Area : 4,200 m2	Aug 2000 ~ Feb 2001	Murata Electronics (Thailand) Ltd.
25	Enkei Thai Delivery Storage, Bangplee I.E., Samutprakarn	1 storey warehouse Area : 913 m2	Oct 2000 ~ Jan 2001	Enkei Thai Co., Ltd.
26	Kobayashi New Factory, Bangplee I.E., Samutprakarn	2 storey factory Area : 1,641 m2	Feb 2001 ~ Aug 2001	Kobayashi Autoparts (Thailand) Co., Ltd.
27	Tanaka Precision Phase-II Factory, Northern Region I.E. Lamphun	1 storey factory Area : 2,519 m2	Jun 2001 ~ Dec 2001	Tanaka precision (Thailand) Ltd.
28	Tanaka Precision Connect Factory, Northern Region I.E., Lamphun	1 storey factory Area : 840 m2	Oct 2002 ~ Jan 2003	Tanaka precision (Thailand) Ltd.
29	Kobayashi Auto Parts Canteen, Bangplee I.E., Samutprakarn	Canteen & other b. Area : 408 m2	Feb 2003 ~ Apr 2003	Kobayashi Autoparts (Thailand) Co., Ltd.
30	Keihin Auto Parts Fuel Pipe Assembly, Rojana I.P., Ayutthaya	1 storey factory Area : 248 m2	Mar 2003 ~ Apr 2003	Keihin Auto Parts (Thailand) Co., Ltd.
31	Murata Stock Material, Northern Region I.E., Lamphun	2 storey warehouse Area : 726 m2	Mar 2003 ~ Sep 2003	Murata Electronics (Thailand) Ltd.
32	Anden DNTH B3 Factory, Amata City Chonburi I.E., Chonburi	1 storey factory Area : 2,262 m2	Mar 2003 ~ Oct 2003	Denso (Thailand) Co., Ltd.
33	Keihin Auto Parts W/H Extension, Rojana I.P., Ayutthaya	1 storey warehouse Area : 2,786 m2	Jun 2003 ~ Sep 2003	Keihin Auto Parts (Thailand) Co., Ltd.
34	KTL Factory-III Expansion, Northern Region I.E., Lamphun	1 storey factory Area : 3,348 m2	Oct 2003 ~ Mar 2004	Keihin (Thailand) Co., Ltd.

<b>No.</b>	<b>Project Name / Location</b>	<b>Building Detail</b>	<b>Con. Period</b>	<b>Client Name</b>
35	Sunarrow Citi Injection Factory, Saraburi	3 storey factory Area : 2,656 m2	Nov 2003 ~ Mar 2004	Sunarrow Citi Co., Ltd.
36	KTR Injection Factory & Office Ext., Rojana I.P., Ayutthaya	2 storey factory Area : 1,793 m2	Mar 2004 ~ Sep 2004	Keihin Auto Parts (Thailand) Co., Ltd.
37	Kobayashi Factory Phase-III, Bangplee New T. I.E., Samutprakarn	2 storey factory Area : 1,278 m2	Oct 2004 ~ Feb 2005	Kobayashi Autoparts (Thailand) Co., Ltd.
38	Enkei Thai Foundry Factory, Bangplee I.E., Samutprakarn	2 storey factory Area : 2,833 m2	Oct 2004 ~ Jan 2005	Enkei Thai Co., Ltd.
39	Explosion Proof Coating Machines, Northern Region I.E., Lamphun	2 storey factory Area : 2,067 m2	Jul 2004 ~ Dec 2004	Electro Ceramics (Thailand) Co., Ltd.
40	Tanaka Precision Phase-III Factory, Northern Region I.E., Lamphun	1 storey factory Area : 5,328 m2	Oct 2004 ~ Feb 2005	Tanaka precision (Thailand) Ltd.
41	Enkei Thai New Painting Plant Bldg., Bangplee I.E., Samutprakarn	1 storey factory Area : 6,696 m2	Nov 2004 ~ Apr 2005	Enkei Thai Co., Ltd.
42	Sanalloy New Factory, Rojana I.P., Ayutthaya	1 storey factory Area : 1,210 m2	Mar 2005 ~ Aug 2005	Sanalloy Industry Co., Ltd.
43	Sunarrow Citi Factory 4, Saraburi	2 storey factory Area : 9,448 m2	Feb 2005 ~ Sep 2005	Sunarrow Citi Co., Ltd.
44	KTR Factory 2 (ECU), Rojana I.P., Ayutthaya	2 storey factory Area : 6,701 m2	Sep 2005 ~ Mar 2006	Keihin Auto Parts (Thailand) Co., Ltd.
45	NGK New Factory Amata City Chonburi I.E., Chonburi	2 storey factory Area : 8,553 m2	Feb 2006 ~ Aug 2006	Siam NGK Spark Plug Co., Ltd.
46	Tanaka Precision Factory 2, Northern Region I.E., Lamphun	2 storey factory Area : 6,122 m2	Jan 2006 ~ Aug 2006	Tanaka precision (Thailand) Ltd.
47	Sakura New Factory, WHA Chonburi I.E., Chonburi	2 storey factory Area : 3,488 m2	Feb 2006 ~ Aug 2006	Sakura Industry (Thailand) Co., Ltd.
48	Sunarrow Citi Phase 4 Renovation, Saraburi	2 storey factory Area : 5,470 m2	May 2006 ~ Sep 2006	Sunarrow Citi Co., Ltd.
49	KTR Factory 2 EMS & Experiment Bl., Rojana I.P., Ayutthaya	1 storey factory Area : 4,345 m2	Oct 2006 ~ Apr 2007	Keihin Auto Parts (Thailand) Co., Ltd.
50	KTR Factory 1 Renovation, Rojana I.P., Ayutthaya	2 storey factory Area : 6,458 m2	Oct 2006 ~ May 2007	Keihin Auto Parts (Thailand) Co., Ltd.
51	Q-Station Building, Laemchabang I.E., Chonburi	1 storey factory Area : 3,600 m2	May 2007 ~ Aug 2007	Mitsubishi Motors (Thailand) Co., Ltd.
52	Yamashin Factory 2 , Rojana I.P., Ayutthaya	2 storey factory Area : 9,330 m2	Apr 2007 ~ Nov 2007	Yamashin Thai Limited.

<b>No.</b>	<b>Project Name / Location</b>	<b>Building Detail</b>	<b>Con. Period</b>	<b>Client Name</b>
53	SUS Factory 1, A.Banthi, Lamphun	2 storey factory Area : 9,928 m2	May 2007 ~ Nov 2007	Standard Units Supply (Thailand) Co., Ltd.
54	PAT Phase-I Mitsubishi Car Parking, Laemchabang I.E., Chonburi	Car parking Area : 160,000 m2	Oct 2007 ~ Dec 2007	Mitsubishi Motors (Thailand) Co., Ltd.
55	DNTH B3 Factory Expansion, Amata City Chonburi I.E., Chonburi	2 storey factory Area : 2,479 m2	Oct 2007 ~ Apr 2008	Denso (Thailand) Co., Ltd.
56	Nachi Head Quarters Office Bld. & Technical Center, Rojana I.P., Rayong	2 storey factory Area : 2,772 m2	Dec 2007 ~ Jun 2008	Nachi Technology (Thailand) Co., Ltd.
57	KTL New Factory Phase-II, Northern Region I.E., Lamphun	2 storey factory Area : 9,038 m2	Jul 2008 ~ Dec 2008	Keihin (Thailand) Co., Ltd.
58	SUS Factory 2, A.Banthi, Lamphun	2 storey factory Area : 9,795 m2	Sep 2008 ~ Mar 2009	Standard Units Supply (Thailand) Co., Ltd.
59	NGK Spark Plugs Sensor Factory, Amata City Chonburi I.E., Chonburi	2 storey factory Area : 6,796 m2	Nov 2008 ~ Aug 2009	NGK Spark Plugs (Thailand) Co., Ltd.
60	Sanko Electronics Thailand Factory, 304 I.P., Prachinburi	2 storey factory Area : 3,040 m2	Sep 2009 ~ Feb 2010	Sanko Electronics (Thailand) Co., Ltd.
61	Murata New Building OTL Factory, Northern Region I.E., Lamphun	1 storey factory Area : 5,342 m2	Jun 2010 ~ Nov 2010	Murata Electronics (Thailand) Ltd.
62	Murata New Bld. EMIFIL Factory, Northern Region I.E., Lamphun	2 storey factory Area : 8,225 m2	Oct 2010 ~ Apr 2011	Murata Electronics (Thailand) Ltd.
63	Mitsubishi Press Factory, Laemchabang I.E., Chonburi	1 storey factory Area : 7,764 m2	Nov 2010 ~ Aug 2011	MMTH Engine Co., Ltd.
64	Thai Sanko New Factory, Rojana I.P., Ayutthaya	2 storey fac. & canteen Area : 8,410 m2	Feb 2011 ~ Jul 2011	Thai Sanko Co., Ltd.
65	S-10 Pro, Amata City I.E., Rayong	1 storey factory Area : 16,611 m2	Feb 2011 ~ Aug 2011	Elleair International (Thailand) Co., Ltd.
66	Welfare facility, Northern Region I.E., Lamphun	Welfare facility Area : 1,814 m2	Jun 2011 ~ Nov 2011	Hana Microelectronics Public Co., Ltd.
67	Marktec Asia New Factory, Gateway City I.E., Chachoengsao	2 storey factory Area : 2,254 m2	Aug 2011 ~ Feb 2012	Marktec Asia Co., Ltd.
68	Siam NDK New Head Office Pinthong 1 I.E., Chonburi	1 storey fac. & office Area : 13,183 m2	Aug 2011 ~ May 2012	Siam NDK Co., Ltd.
69	Tanaka Precision Factory 4, Northern Region I.E., Lamphun	1 storey factory Area : 7,979 m2	Oct 2011 ~ May 2012	Tanaka precision (Thailand) Ltd.
70	AGC PML, Saha Group I.P., Lamphun	2 storey fac. & office Area : 9,057 m2	Feb 2012 ~ Aug 2012	AGC Micro Glass (Thailand) Co., Ltd.

<b>No.</b>	<b>Project Name / Location</b>	<b>Building Detail</b>	<b>Con. Period</b>	<b>Client Name</b>
71	Ryobi Thai Factory Phase-I Amata City I.E., Rayong	2 storey factory Area : 24,472 m2	Feb 2012 ~ Oct 2012	Ryobi Die Casting (Thailand) Co., Ltd.
72	KD Factory Expansion, Laemchabang I.E., Chonburi	1 storey fac. & W/H Area : 15,015 m2	Apr 2012 ~ Nov 2012	Mitsubishi Motors (Thailand) Co., Ltd.
73	Itoh Seiko Thai Factory, Amata City Chonburi I.E., Chonburi	2 storey factory Area : 5,760 m2	Apr 2012 ~ Nov 2012	Itoh Seiko (Thailand) Co., Ltd.
74	Sanalloy Amata City New Factory, Amata City I.E., Rayong	2 storey factory Area : 3,324 m2	May 2012 ~ Nov 2012	Sanalloy (Thailand) Co., Ltd.
75	Nissei Jushi Thai New Factory, Eastern Seaboard I.E., Rayong	2 storey factory Area : 5,505 m2	Sep 2012 ~ Mar 2013	Nissei Plastic Machinery (Thailand) Co., Ltd.
76	Murata-15 New Factory Northern Region I.E., Lamphun	2 storey factory Area : 9,824 m2	Sep 2012 ~ Mar 2013	Murata Electronics (Thailand) Ltd.
77	Tsukatani Thailand New Factory, Pinthong 2 I.E., Chonburi	2 storey factory Area : 5,495 m2	Nov 2012 ~ Jun 2013	Tsukatani (Thailand) Co., Ltd.
78	SUS Warehouse Extension, A.Banthi, Lamphun	2 storey factory Area : 5,197 m2	Nov 2012 ~ Jun 2013	Standard Units Supply (Thailand) Co., Ltd.
79	KLT Injection Korat Factory, Nakornrachasrima	2 storey factory Area : 5,700 m2	Dec 2012 ~ Sep 2013	Kawasumi Laboratories (Thailand) Co., Ltd.
80	NGK Sensor Factory Expansion, Amata City Chonburi I.E., Chonburi	1 storey factory Area : 2,900 m2	Jan 2013 ~ Jul 2013	NGK Spark Plugs (Thailand) Co., Ltd.
81	MMTh Press Expansion, Laemchabang I.E., Chonburi	1 storey factory Area : 8,420 m2	Jan 2013 ~ Jan 2014	MMTh Engine Co., Ltd.
82	Siam Chuyo New Factory, WHA Eastern Seaboard I.E., Rayong	2 storey factory Area : 11,786 m2	Feb 2013 ~ Dec 2013	Siam Chuyo Co., Ltd.
83	Siam NGK New Warehouse, Amata City Chonburi I.E., Chonburi	2 storey warehouse Area : 2,707 m2	May 2013 ~ Oct 2013	Siam NGK Spark Plug Co., Ltd.
84	Kure Grinding Wheel Thai New Factory, Amata City I.E., Rayong	2 storey factory Area : 8,442 m2	Jun 2013 ~ Mar 2014	Kure Grinding Wheel (Thailand) Co., Ltd.
85	Daiki Aluminium Amata City Factory, Amata City I.E., Rayong	2 storey factory Area : 4,348 m2	Aug 2013 ~ May 2014	Daiki Aluminum Industry (Thailand) Co., Ltd.
86	Thai Yanagawa 304 New Factory, 304 IP, Prachinburi	2 storey factory Area : 16,976m2	Aug 2013 ~ Jun 2014	Thai Yanagawa Co., Ltd.
87	SUS BKK Pinthong 3 New Factory, Pinthong 3 IE, Chonburi	1 storey factory Area : 3,746 m2	Dec 2013 ~ Jun 2014	System Upgrade Solution BKK Co., Ltd.
88	BSAP-TC, Pathumthani	3 storey technical c. Area : 8,476 m2	Feb 2014 ~ Dec 2014	Bridgestone Asia Pacific Technical Center Co., Ltd.

<b>No.</b>	<b>Project Name / Location</b>	<b>Building Detail</b>	<b>Con. Period</b>	<b>Client Name</b>
89	Senko Laemchabang Logistics Center, Pinthong Land, Chonburi	1 storey warehouse Area : 22,359 m2	Jun 2014 ~ Mar 2015	Senko Global Logistics (Thailand) Co., Ltd.
90	SST Factory 1 & Office, Hi-Tech Kabinburi IE, Prachinburi	1 storey factory Area : 6,873 m2	Aug 2014 ~ Apr 2015	Sankei Summit (Thailand) Co., Ltd.
91	AZL Thailand New LS Center, Rojana I.P., Prachinburi	2 storey warehouse Area : 7,449 m2	Jul 2015 ~ Feb 2016	AZL (Thailand) Co., Ltd.
92	MTL-1 Factory Rebuilding	2 storey, Fac.& Office Area : 10,066 m2	Jul 2015 ~ Feb 2016	Murata Electronics (Thailand) Ltd.
93	Siam NDK Factory Extension, Pinthong IE, Chonburi	2 storey factory Area : 3,866 m2	Nov 2015 ~ May 2016	Siam NDK Co., Ltd.
94	Hoei Metal New Factory, Kabinburi IZ, Prachinburi	2 storey fac. & office Area : 4,015 m2	Dec 2015 ~ Jul 2016	Hoei Metal (Thailand) Co., Ltd.
95	NMAT Factory 2, WHA Chonburi IE, Chonburi	2 storey factory Area : 6,705 m2	Feb 2016 ~ Oct 2016	Nikkei MC Aluminium (Thailand) Co., Ltd.
96	Itoh Seiko Thai Factory 2, Amata City Chonburi IE, Chonburi	1 storey factory Area : 9,967 m2	Jun 2017 ~ Jan 2018	Itoh Seiko (Thailand) Co., Ltd.
97	SUS Factory 4 A.Banthi, Lamphun	1 storey factory Area : 6,385 m2	Aug 2017 ~ Apr 2018	Standard Units Supply (Thailand) Co., Ltd.
98	Murata Carparking Building, Northern Region IE, Lamphun	5 storey car parking Area : 19,952 m2	Oct 2017 ~ May 2018	Murata Electronics (Thailand) Ltd.
99	SST Factory 2 Hi-Tech Kabinburi IE, Prachinburi	1 storey factory Area : 11,519 m2	Dec 2017 ~ Jun 2018	Sankei Summit (Thailand) Co., Ltd.
100	YLTH Bangna Core, Bangna-Trad km.27, Samutprakarn	2 storey warehouse Area : 15,872 m2	Sep 2017 ~Mar 2019	Yusen Logistics (Thailand) Co., Ltd.
101	Hana Clean Room, Northern Region IE, Lamphun	2 storey factory Area : 9,000 m2	Apr 2018 ~ Dec 2018	Hana Microelectronics Public Co., Ltd.
102	MEC Thai Factory Rojana IP, Ayutthaya	2 storey factory Area : 4,315 m2	Sep 2018 ~ May 2019	MEC Specialty Chemical (Thailand) Co., Ltd.
103	MTL-16 New Factory Northern Region IE, Lamphun	2 storey factory Area : 9,993 m2	Dec 2018 ~ Aug 2019	Murata Electronics (Thailand) Ltd.
104	MTL-17 New Factory Northern Region IE, Lamphun	2 storey factory Area : 9,995 m2	Jan 2019 ~ Sep 2019	Murata Electronics (Thailand) Ltd.
105	Siam NGK New Canteen Amata City Chonburi IE, Chonburi	2 storey factory Area : 380 m2	Feb 2019 ~ Jul 2019	Siam NGK Spark Plug Co., Ltd.
106	Thai NDK New Factory Pinthong 3 IE, Sriracha, Chonburi	1 storey factory Area : 2,751 m2	Feb 2019 ~ Aug 2019	Thai NDK Co., Ltd.



107	NMAT Factory -3 and Reserve Pond WHA Hemaraj Chonburi IE, Chonburi	1 storey factory Area : 7,515.73 m2	May 2019 ~ Oct 2019	Nikkei MC Aluminium (Thailand) Co., Ltd.
108	AMGT Factory-C Extension Project SAHA Group Industrial Park, Lamphun	2 storey factory Area : 9,969 m2	Nov 2019 ~ May 2020	AGC Micro Glass (Thailand) Co., Ltd.
109	Piping and preparation work for FL120 WHA IE, Nongkhae, Saraburi	Piling work Area: 6,000m2	Aug 2019 ~ Nov 2019	Michelin Siam Co., Ltd.
110	SST Factory 4 Hi-Tech Kabinburi IE, Prachinburi	2 storey factory Area : 6,279 m2	May 2019 ~ Dec 2019	Sankei Summit (Thailand) Co., Ltd.
111	SUS BKK New Building Project Amata IE, Chonburi	4 storey factory Area : 7,887.22 m2	Dec 2019 ~ May 2021	System Upgrade Solution BKK Co., Ltd.
112	Ryobi Thai Factory Phase 2 Project Amata City Rayong Industrial Estate	1 storey Factory Area : 8,694.93 m2	Jul 2020 ~ Feb 2021	Ryobi Die Casting (Thailand) Co., Ltd.
113	GSPI Factory Project Northern Region IE, Lamphun	1 storey Factory Area : 4,202.34 m2	Aug 2020 ~ May 2021	Keihin (Thailand) Co., Ltd.
114	Salus Bioceutical (Thailand) Factory & Lab Doi saket, Chiangmai	1,2 storey Factory Area : 3,521.80 m2	May 2021 ~ Dec 2021	Salus Bioceutical (Thailand) Co., Ltd.
115	SI Building Project Laemchabung IE, Chonburi	1 storey Factory Area : 4,419 m2	Aug 2020 ~ Dec 2021	Michelin Siam Co., Ltd.